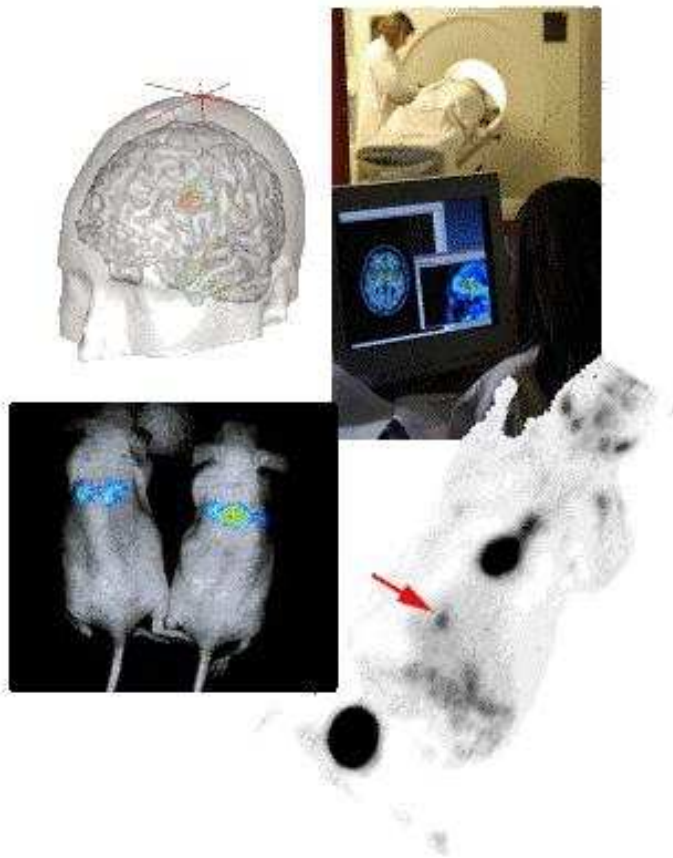




EMMI

European Master in Molecular Imaging



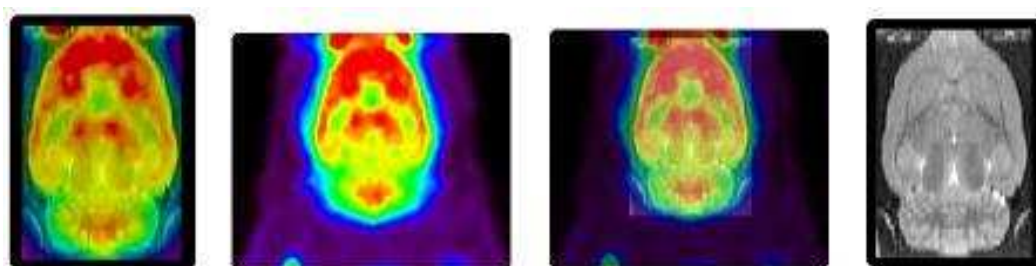
WWW.E-MMI.EU

EUROPEAN MASTER IN MOLECULAR IMAGING

Molecular Imaging combines **advanced engineering** in molecular, cellular and animal biology together with **state-of-the-art technology** for non invasive imaging of molecules in **living individuals**. This new science contributes immensely to biomedicine because it is the major technology that can explore and measure the chemistry of life in a non invasive manner. Through the invention of methods for the study of biological processes and of novel diagnostic protocols, this field is key for the development of **new diagnostics and** therapeutics. Molecular imaging was listed as one of the “Ten emerging technologies that will **change the world**” by the **MIT 2003 Technology Review**.

The European master EMMI offers an **interdisciplinary** program dedicated to molecular imaging in all its **multimodal** aspects. This two-year curriculum, supported by the **ERASMUS** Curriculum Development program until 2009, was implemented by prominent European Molecular Imaging research groups.,

EMMI prepares students for **academic and industrial positions**.



COURTESY OF: CEA/DSV/LIME

PARTICIPATING RESEARCH GROUPS

France - CEA / SHFJ
Pr. Bertrand **TAVITIAN**,
EMMI coordinator ,
preclinical and clinical positron
emission tomography (PET)

Greece - University of Crete
Pr. Sifis **PAPAMATHEAKIS**,
optical imaging

Italy - University of Torino
Pr. Silvio **AIME**,
imaging probes

Belgium - University of Antwerp
Pr. Annemie **VAN DER LINDEN**,
magnetic resonance imaging (MRI)

France - University Paris-Sud 11
Pr. Philippe **CHAUMET RIFFAUD**
physiology, radiochemistry,
nuclear medicine

EMMI CURRICULUM – MAIN TOPICS

Knowledge update	Specialisation modules	Applications
Molecular Imaging State of the art	Signal and image processing	Certificate for animal experimentation
Basic tools in chemistry	MRI / NMR	Molecular imaging: - Industrial context - State of the art - Multimodal imaging
Basic tools in mathematics	PET / SPECT / X-Ray	
Chemical biology	Optical imaging	Master thesis Over 40 top European laboratories from academia and industry are affiliated to EMMI.
Integrated physiology	Ultrasound	
Pharmacokinetics And ADME		

Among the optional courses:

Bridging courses on biology and physiology

Scientific English, French for beginners, communication

Modules in Optical Imaging, NeuroMRI and Imaging probes organized by European MI leading experts

How to JOIN EMMI

EMMI is suitable for students with a bachelor degree (at least 180 ECTS) from a recognized institution in biomedical sciences, chemistry, biology, bioengineering, biotechnology. Fluency in English is required. EMMI modules are also open to experienced scientists as vocational training.

A PARTNERSHIP BETWEEN



NATIONAL INSTITUTE FOR NUCLEAR
SCIENCE AND TECHNOLOGY - FRANCE



UNIVERSITY OF ANTWERP - BELGIUM



UNIVERSITY OF CRETE - GREECE



UNIVERSITY OF TORINO - ITALY



UNIVERSITY OF PARIS-SUD 11 - FRANCE

EMMI IS SUPPORTED BY



energie atomique • énergies alternatives



MORE INFORMATION AND REGISTRATION

vivienne.fardeau@cea.fr

www.e-mmi.eu